

Friends Meeting House, Pickering

19 Castlegate, Pickering, YO18 7AX

National Grid Reference: SE 79795 84336



Statement of Significance

The meeting house was built in 1793; the attached burial ground was opened at the same time. The building was not used for regular meetings between 1843 and 1936 but the interior is still substantially intact, with some minor alterations. The meeting house still retains much of its original character and is of high heritage significance

Evidential value

The building still contains many elements of the original arrangements and overall the building is of high evidential value.

Historical value

A well-preserved example of a late eighteenth century town-centre meeting house with some nineteenth and twentieth century additions and alterations. The building is of high historical value.

Aesthetic value

The stone exterior of the building is attractive and contributes positively to the character of the Pickering Conservation Area. The interior still preserves a great deal of its original character and the building as a whole is of high aesthetic value.

Communal value

The meeting house been in use for Quaker worship intermittently since 1796 and more recently for other community uses and the building has high communal value.

Part 1: Core data

- 1.1 Area Meeting: *Pickering & Hull*
- 1.2 Property Registration Number: *0026370*
- 1.3 Owner: *Area Meeting*
- 1.4 Local Planning Authority: *Ryedale District Council*
- 1.5 Historic England locality: *Yorkshire*
- 1.6 Civil parish: *Pickering*
- 1.7 Listed status: *II*
- 1.8 NHLE: *1315902*
- 1.9 Conservation Area: *Pickering*
- 1.10 Scheduled Ancient Monument: *No*
- 1.11 Heritage at Risk: *No*
- 1.12 Date(s): *1793; 1974-9*
- 1.13 Architect (s): *Not established*
- 1.14 Date of visit: *1 April 2016*
- 1.15 Name of report author: *Neil Burton*
- 1.16 Name of contact(s) made on site: *Paul Wicks*

1.17 Associated buildings and sites:

Warden's cottage at 19 Castlegate. A burial ground attached to the former meeting house in Undercliffe no longer exists; the ground was sold in 1897.

1.18 Attached burial ground: Yes

1.19 Information sources:

Alley, Elizabeth, *Faithfully to Meeting*, 1993.

Butler, D.M., *The Quaker Meeting Houses of Britain*, 1999, vol.2 pp.754-5.

Stell Christopher, *Nonconformist Chapels and Meeting houses in the North of England*, RCHM, 1994. pp 219.

North Yorkshire County Historic Environment Record ref.DNY 10916

Local Meeting survey by Paul Wicks, 24 January 2016

Part 2: The Meeting House & Burial Ground: history, contents, use, setting and designation

2.1. Historical background

The first meeting house in Pickering was bought in about 1675 and registered in 1689. The property was located in Undercliff. There was a burial ground attached, whose first recorded use was in 1696. It is not clear whether the building was adapted from an existing structure but apparently it had the customary arrangement with two chambers. In 1793 a substantial new meeting house was built on a new site above Undercliff, with a burial ground attached. Regular meetings were discontinued between 1843 and 1936, but in 1879 the building was refurbished and the women's meeting room was re-fitted. Cloakrooms were added in 1945. At about the same time a large wooden hut from the former Pickering Golf Club was erected to the north west of the meeting house to serve as a hostel (this has since been demolished). A new kitchen extension was added on the north side of the meeting house in 1976 and has been enlarged and improved in recent years.

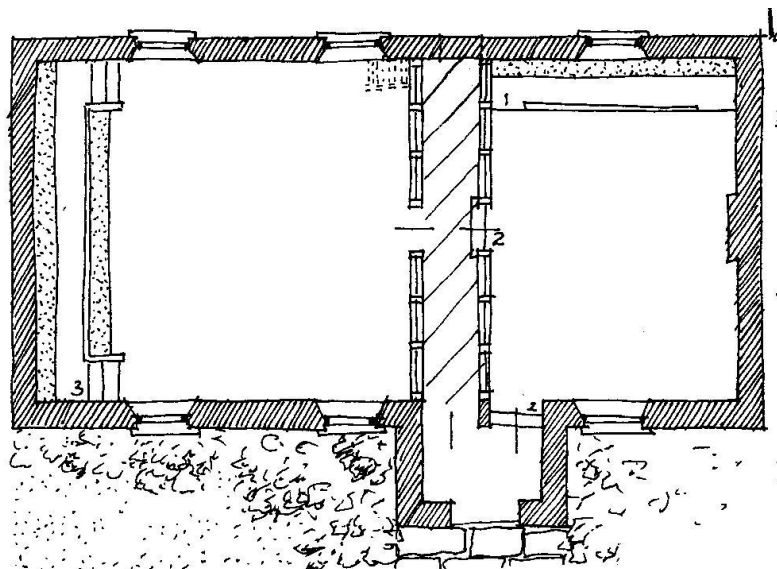


Fig.1 A plan of the meeting house in 1974, *Butler 1999 vol.2 p.754* (north is at the top).

2.2. The building and its principal fittings and fixtures

The meeting house is set well back from Castlegate behind a row of cottages, one of which (19 Castlegate) is occupied by the resident warden. The building is single-storeyed and rectangular on plan, with walls of coursed local sandstone ashlar, originally well-tooled, and a hipped roof covered in Welsh slate with red brick chimneystacks in the north and east roof slopes. The roof-covering was renewed in 2010. The main south front has a projecting porch to right of centre, with a four-centred arched entrance and the date 1793 inscribed above. To the left of the porch are two large rectangular openings with scribed keystones to the lintels and 12/12 small-paned timber sash windows. To the right of the porch is a single window of similar pattern. Against the west end walls are two small stone additions with monopitch roofs, which were added as lavatories in the 1940s but are now used for storage. In the north rear wall are three further window openings and a large flat-roofed addition, largely dating from the mid 1970s, partly of brick and partly timber-framed but rendered externally, containing a kitchen and modern lavatories.

The porch shelters two entrances. One leads directly to the women's meeting room and the other to a low-ceilinged cross passage. The passage has a single row of hinged timber panels on both sides. The women's meeting room at the east end of the meeting house is raised two steps above the passage floor. The interior was refitted in the 1870s, with a matchboarded dado, now painted, and an elders' stand of the same character across the north wall immediately adjacent to the cross-passage - an unusual arrangement. In the east end wall is the chimneybreast for a former stove or hearth. The large main meeting room has evidently been refurbished since David Butler's 1974 sketch plan. The room has a modern wood-block floor, plain plastered walls and a dais across the west end raised three steps above the main floor. There is no elders' stand or any other fixed seating. At the east end of the room is a narrow gallery above the cross-passage with a delicate timber handrail. The only means of access to the gallery is by ladder. The modern kitchen extension at the rear has been re-fitted recently.

2.3. Loose furnishings

There are some timber benches in the women's meeting room which probably belong to the 1879 refurbishment; some of the benches are varnished pine, some are painted.

2.4. Attached burial ground (if any)

There is a substantial burial ground on the west side of the meeting house, largely enclosed by stone walls, except on the west side where the ground falls away. Since 1957 burials have been recorded on two stone tablets mounted on the meeting house wall. Older burial markers were ranged against the walls in 1974 and the ground is now maintained as a garden.

2.5. The meeting house in its wider setting

The meeting house is hidden from Castlegate by a row of two-storey stone cottages, one of which was apparently a blacksmith's shop and has a stone mounting block on the street side. The warden's cottage is in this row of cottages and is listed Grade II (see list description below). The ground slopes across the site from east to west and the west side of the burial ground overlooks the northern part of Pickering.

2.6. Listed status

Both the meeting house and the warden's cottage are properly listed at grade II.

2.7. Archaeological potential of the site

North Yorkshire County Council HER was consulted, ref. DNY 10916. There is no record of any archaeological deposits. The site is of medium archaeological potential, mainly for its location on the edge of the town settlement.

Part 3: Current use and management

3.1. Condition

- i) Meeting House: Good
- ii) Attached burial ground (if any): Optimal

3.2. Maintenance

The last QI was carried out in 2012 by Stephen Parry AABC. The building was found to be generally in excellent condition, having been re-roofed, re-pointed and re-decorated in 2010. The Local Meeting has enough money to cover internal works. External maintenance and repair is covered by the Area Meeting.

3.3. Sustainability

The meeting does not use the Sustainability Toolkit, but has implemented measures to reduce its environmental impact. These include

- New roof insulation and secondary glazing.
- Air source heat pump.
- Additional porch door to exclude draughts

Neither the meeting house nor the warden's cottage have an EPC, but the meeting would consider obtaining one, depending on the cost.

3.4. Amenities

The meeting has all the amenities it needs in the meeting house - including large and small meeting rooms, a well-equipped kitchen and toilets. There is a resident warden who lives in an adjacent cottage. The meeting house is in central Pickering, which is served by daily bus services. There is ample street parking but there is no secure parking for bicycles.

3.5. Access

There is level access to the meeting house and throughout the ground floor, except to the smaller meeting room which is up 2 steps. There is an accessible WC and a hearing loop, but no specific facilities for partially-sighted people. A Disability Access Audit has not been carried out.

3.6 Community Use

Friends use the building for 2 hours per week. The 3 meeting spaces in the building are available for community lettings for a possible 216 hours per week (3x12x6) and are used for approximately 44 hours per week. The meeting has a lettings policy. No alcohol is permitted, nor use by groups in opposition to Quaker values, but use by political parties is allowed. Users value the nice atmosphere, reasonable rates and on-street parking near-by.

3.7. Vulnerability to crime

There has been no sign of general crime or heritage crime at the site. The area is generally well cared-for, has low crime levels, low deprivation and high community confidence. There is no liaison with the local neighbourhood policing team, but Friends would consider making contact if necessary.

3.8. Plans for change

The meeting house was thoroughly repaired and refurbished in 2010 and there are no plans for change to the building.

Part 4: Impact of Change

4.1. To what extent is the building amenable or vulnerable to change?

i) As a Meeting House used only by the local Meeting: there may be some scope for minor change to the interior of the building, subject to listed building constraints.

ii) For wider community use, in addition to local Meeting use: as above, there may be scope for minor alterations, subject to listed building constraints.

iii) Being laid down as a Meeting House: the building occupies an attractive site and another use could probably be found if the meeting were laid down, subject to listed building constraints.

Part 5: Category: 2

Part 6: List descriptions

Name: **FRIENDS' MEETING HOUSE**

List entry Number: 1315902

Location

FRIENDS' MEETING HOUSE, CASTLEGATE

County: North Yorkshire

District: Ryedale

District Type: District Authority

Parish: Pickering

National Park: Not applicable to this List entry.

Grade: II

Date first listed: 19-Dec-1974

List entry Description

1. CASTLEGATE 5340 (West Side) Friends' Meeting House SE 7984 3/161 19.12.74. II GV 2. Dated 1793 on panel over door. Rectangular ashlar building of 1 storey with hipped Welsh slate roof. 3 windows, flat lintels with incised keystones, hung sashes with glazing bars. Entrance porch with coped gable and elliptical-headed archway with keystone and impost blocks. Side elevation has small outshot. Later kitchen premises to rear.

Nos 8 to 19 (consec) and 14A form a visual group with the Friends' Meeting House, No 8 being of local interest.

Listing NGR: SE7979584336

Name: **19, CASTLEGATE**

List entry Number: 1149315

Location

19, CASTLEGATE

County: North Yorkshire

District: Ryedale

District Type: District Authority

Parish: Pickering

National Park: Not applicable to this List entry.

Grade: II

Date first listed: 27-Nov-1975

List entry Description

CASTLEGATE 1. 5340 (West Side) No 19 SE 7984 4/160 II GV 2. Probably C17 origins. 2 builds in coursed stone with steep pantile roof. Painted white. Left hand is 1 storey, blocked door to left, 1 modern casement window of 4 lights, plain door. Mounting block. Right hand taller, of 1 storey and with 2 modern dormers. 2 brick stacks. 3 windows, 2 of which are of 3 lights, wood lintels. Section to the right is taller and slightly later. 1 brick stack. Modern wood garage doors.

Nos 8 to 19 (consec) and 14A form a visual group with the Friends' Meeting House, No 8 being of local interest.

Listing NGR: SE7982584333

National Grid Reference: SE 79826 84329