

***Friends Meeting House, Scarborough***

*Quaker Close, Woodlands Drive, Scarborough, YO12 5QZ*

*National Grid Reference: TA 02115 88434*



***Statement of Significance***

***A substantial modern meeting house built in 1990 in a vernacular style to the designs of Edwin Trotter on a new site in the Scarborough outskirts. A few elements were re-used from an earlier building, but overall the building is of low heritage significance.***

***Evidential value***

***The building is an entirely new structure of 1990 and of low evidential value.***

**Historical value**

***Although the Quakers in Scarborough have a long and well-documented history, the present building is of low historical value.***

**Aesthetic value**

***The building is a pleasing modern structure of medium aesthetic value.***

**Communal value**

***The meeting house is well-used by Quakers and by other local groups and has high communal value.***

**Part 1: Core data**

1.1 Area Meeting: *Pickering & Hull*

1.2 Property Registration Number: *0004980*

1.3 Owner: *Area Meeting*

1.4 Local Planning Authority: *Scarborough Borough Council*

1.5 Historic England locality: *Yorkshire*

1.6 Civil parish: *Scarborough*

1.7 Listed status: *Not listed*

1.8 NHLE: *Not applicable*

1.9 Conservation Area: *No*

1.10 Scheduled Ancient Monument: *No*

1.11 Heritage at Risk: *No*

1.12 Date(s): *1990*

1.13 Architect (s): *Edwin Trotter and Ray Hodgson*

1.14 Date of visit: *31 March 2016*

1.15 Name of report author: *Neil Burton*

1.16 Name of contact(s) made on site: *Angela Nellis*

1.17 Associated buildings and sites:

*Former meeting house with burial ground, St. Sepulchre Street, Scarborough, (NGR TA 04646 88827). Listed grade II as St Peter's Centre. See List description below.*

1.18 Attached burial ground: *No*

1.19 Information sources:

Butler, D.M., *The Quaker Meeting Houses of Britain*, 1999, vol.2 pp.759-63  
Shaw, Cedric, *Friends Meeting house, Quaker Close, Scarborough* (1995)

Stell, Christopher, *Chapels and Meeting Houses in Northern England*, RCHM, 1994, p.220  
North Yorkshire Heritage Environment Record, SMR number MNY 31245  
Local Meeting survey by Angela Nellis and Ann Turner, January 2016

## **Part 2: The Meeting House & Burial Ground: history, contents, use, setting and designation**

### 2.1. Historical background

Friends gathered in the house of Peter Hodgson in Carr Street from the 1650s and in 1676 a chapel was built in Low Conduit Street (now Sandgate). Friends were numerous in Scarborough and for much of the eighteenth century the meeting house was a fashionable and convenient place for visitors to worship. In about 1800 the building was lost to town improvement and a substantial new meeting house with two main rooms was built in 1801 off St Sepulchre Street (fig.1), on a site formerly occupied by a Franciscan convent. The meeting house building still survives (fig.4). In 1894 Friends followed the move of the town centre away from the harbour area and bought a site in York Place where a new building in a simplified Tudor style (fig.2) with a large main meeting room and other facilities was erected to the designs of Fred Rowntree. This building was demolished in 1988 as part of a redevelopment scheme and Friends obtained a new site at Woodlands Drive on the western outskirts of the town near Scarborough Hospital. A new meeting house with a detached residence for a warden was built to the designs of Edwin Trotter, with a Joseph Rowntree Trust development of sheltered housing nearby. The cost of the new site and new meeting house was met almost entirely from the compensation paid for the loss of the York Place site. The new meeting house opened in 1990



Fig. 1 The old meeting house of 1801 in St Sepulchre Street, which survives as a private house.  
(Scarborough Local Meeting archive)



Fig.2 The 1894 meeting house in York Place by Fred Rowtree, demolished in 1988 (Scarborough Local Meeting archive)

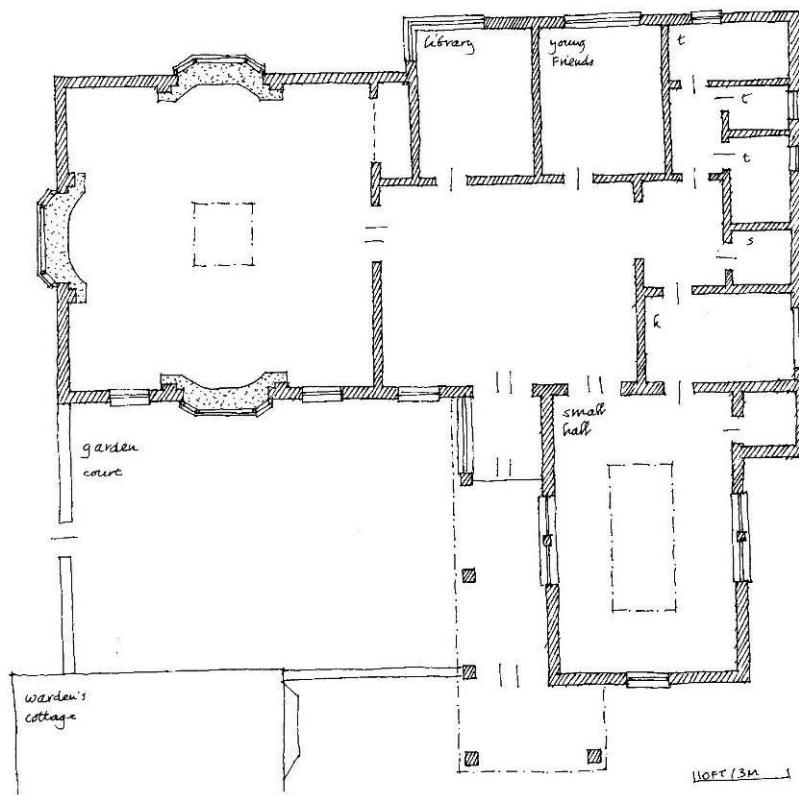


Fig.3 The ground plan of the present meeting house. *Butler* 1999 vol.2 p.763, (north is to the left of the plan).

## 2.2. The building and its principal fittings and fixtures

The meeting house is designed in a modern domestic style and is single-storeyed. The external walls are faced with red brick laid in stretcher bond. The broad hipped roofs are covered with red pantiles with two prominent timber lantern-lights. The building is roughly L-shaped on plan, with the main meeting room and a smaller room in the two arms of the L and a central section containing a large entrance hall, kitchen, toilets, library and other spaces. A wide open porch leads to the entrance hall which links all the rooms. The main meeting room is rectangular, with large projecting bay windows on three sides and prominent *ghulam* timber roof trusses resting on internal piers. Both this room and the small hall are entered by glazed double doors salvaged from the York Place meeting house and the building also contains a salvaged terracotta sign reading FRIENDS MEETING HOUSE. Immediately adjoining the meeting house is a rectangular brick bungalow built to house the warden.

## 2.3. Loose furnishings

There are several timber benches in the building which came from the York Place Meeting House.

## 2.4. Attached burial ground (if any)

None

## 2.5. The meeting house in its wider setting

The meeting house occupies a conspicuous site next to the main entrance to Scarborough Hospital in an area of 20th century housing.

The former meeting house in St Sepulchre Street, in central Scarborough, (TA 046 888) survives in use as a private dwelling. The burial ground is a private garden, but retains several burial markers.



Fig.4 the former meeting house and burial ground in St Sepulchre Street

## 2.6. Listed status

The building is not a candidate for the statutory or local lists.

## 2.7. Archaeological potential of the site

The site has low archaeological potential; this is an out of town site with no record of early habitation.

## **Part 3: Current use and management**

*See completed volunteer survey*

### 3.1. Condition

- i) Meeting House: Good
- ii) Attached burial ground (if any): N/A

### 3.2. Maintenance

The last Quinquennial Inspection was made in August 2015. It was carried out by Bell Snoxell of Barclays Bank House, Baxtergate, Whitby, YO21 1BW. Quotes have been sought for the minor necessary work identified including mortar pointing to the roof, attention to some windows and some intermittent problems of moisture ingress around the roof lanterns. The meeting has adequate funds to cover the cost of these works and there is an ongoing five-year maintenance plan.

### 3.3. Sustainability

The meeting uses the Sustainability Toolkit whenever possible and has implemented measures to reduce its environmental impact. These include

- photovoltaic panels on the roof
- energy-saving light bulbs.
- water conservation
- lift-sharing to meetings

The meeting house does not have an EPC but there was a recent energy-saving check on the warden's bungalow.

### 3.4. Amenities

The meeting has all the amenities it needs in the meeting house - including three meeting rooms of different sizes, a well-equipped kitchen, toilets a library and various ancillary storage spaces. A warden lives on site.

The meeting house is on the western edge of Scarborough near the main hospital. There are buses from the centre (and railway station) every day except Sunday. There are 28 car parking spaces and 2 spaces for disabled people. There is secure storage for bicycles.

### 3.5. Access

The meeting house is fully accessible to people with disabilities. There is level access into and inside the building. There is an accessible WC and a hearing loop in the two largest

meeting rooms, with larger signs for the benefit of partially-sighted people. There has not been a Disability Access Audit, but there are no obvious issues.

### 3.6 Community Use

The building is used by Friends for about 5 hours per week. The building is theoretically available for community lettings for a maximum number of 105 hours per week (three rooms) and is let for an average of 35 hours per week in summer and 85 hours per week in winter. The meeting has a lettings policy. Use is welcomed by local Community groups for worthwhile purposes. Quaker groups and some other groups previously agreed by the meeting have free use and some users have a reduced rate. Users value the friendly atmosphere good amenities, economic pricing and the availability of car parking.

### 3.7. Vulnerability to crime

There has been no heritage crime at the site, but some vandalism (probably by local schoolboys), which was not reported to the police. The locality is generally well cared-for, has low crime levels, low deprivation and high community confidence. There is good liaison with the Local Neighbourhood Policing Team.

### 3.8. Plans for change

There are no current plans for change.

## **Part 4: Impact of Change**

### 4.1. To what extent is the building amenable or vulnerable to change?

*i) As a Meeting House used only by the local Meeting:* the meeting house is a modern building and has all the facilities the meeting currently needs. There is probably some scope for change, if required.

*ii) For wider community use, in addition to local Meeting use:* the meeting house is already used by community groups. There is probably some scope for related change, if required.

*iii) Being laid down as a Meeting House:* the building could doubtless serve a wholly secular use if laid down and there are no heritage constraints.

## **Part 5: Category: 3**