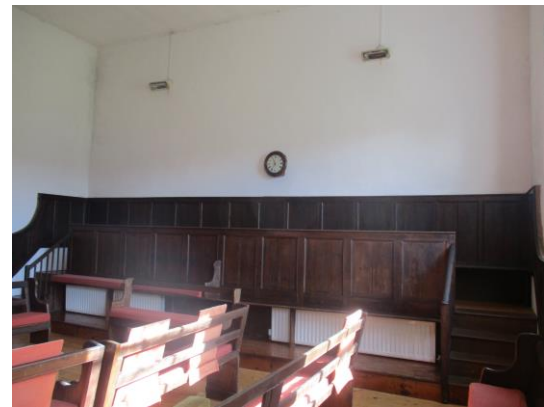


Friends Meeting House, Bainbridge

Bainbridge, Leyburn, DL8 3EF

National Grid Reference: SD 93443 90410



Statement of Significance

The purpose-built meeting house of 1841 has overall high heritage significance. The building retains high quality nineteenth century internal fittings including vertical sliding shutters and seating. The meeting house is set in an attractive burial ground and includes a former stables and a number of outbuildings collectively making a positive contribution to the conservation area and Dales landscape.

Evidential value

The building and site have medium evidential values primarily associated with the potential to yield information about the building's construction and past Quaker activity. The site was first in use as a burial ground from 1672.

Historical value

The meeting house and burial ground have high historic value. The meeting room retains its historic internal layout, as well as high quality joinery dating from the nineteenth century including shutters, elders' stand and gallery.

Aesthetic value

The meeting house is very much part of the distinctive character of Bainbridge, making use of local materials in a Georgian vernacular style. The exterior, interior spaces and the simplicity of the historic fittings have exceptional aesthetic value. The burial ground has unmarked graves and simple headstones following Quaker tradition, which adds to the aesthetic value of the site.

Communal value

The site has medium communal value. The area was first used as a burial ground from 1672 and continues to be used as a place of worship today.

Part 1: Core data

- 1.1 Area Meeting: *Wensleydale & Swaledale*
- 1.2 Property Registration Number: *0032450*
- 1.3 Owner: *Wensleydale & Swaledale Quaker Trust*
- 1.4 Local Planning Authority: *Yorkshire Dales National Park Authority*
- 1.5 Historic England locality: *Yorkshire*
- 1.6 Civil parish: *Bainbridge*
- 1.7 Listed status: *II*
- 1.8 NHLE: *1301422*
- 1.9 Conservation Area: *Bainbridge*
- 1.10 Scheduled Ancient Monument: *No*
- 1.11 Heritage at Risk: *No*
- 1.12 Date(s): *1841*
- 1.13 Architect (s): *Not established*
- 1.14 Date of visit: *7 April 2016*
- 1.15 Name of report author: *Emma Neil*
- 1.16 Name of contact(s) made on site: *Edna Rossiter*
- 1.17 Associated buildings and sites:

Detached burial ground at Aysgarth NGR SE 00158 88349; Hawes NGR SD 87488 89837 and Low Ellington.

1.18 Attached burial ground: *Yes*

1.19 Information sources:

David M. Butler, *The Quaker Meeting Houses of Britain* (London: Friends Historical Society, 1999), vol. II, pp. 744.

David Hall, *Richard Robinson of Countersett 1628-1693 and the Quakers of Wensleydale*, 1989.

June Hall, *Step by Step round Quaker Sites in Wensleydale*, Unicorn Projects: Leyburn, 2001.

Helen E. Roberts, *Researching Yorkshire Quaker History: A Guide to Sources*, University of Hull, 2003, pp. 54.

Jan Reed, *Local Meeting Survey*, January 2016.

Leach, P. and Pevsner, N., *The Buildings of England: Yorkshire West Riding* ed. (New Haven and London: Yale University Press, 2009), pp.629.

Conservation area appraisal

Part 2: The Meeting House & Burial Ground: history, contents, use, setting and designation

2.1. Historical background

Wensleydale has strong associations with the early Quaker movement; George Fox travelled through the North and East Ridings of Yorkshire in 1651 and 1652 and is recorded to have visited Wensleydale in May 1652. Richard Robinson who lived at Countersett Hall was one of the first to be convinced of Fox's preachings in the area, after hearing Fox at Askrigg. Robinson along with Richard Hubberthorne travelled through the local villages preaching. Meetings were first held in Anne Coward's house in Bainbridge which was purchased by the Friends in 1668 for use as a meeting house. The Friends purchased a plot of land for use as a burial ground in 1672 in Holme Bray, as the present site did not have suitable land for this use. By 1700, a new meeting house was built. The school master in Bainbridge left the Friends property in 1745 to allow for the upkeep of the meeting house. This meeting house was sold to the Congregationalists in 1841.

The present meeting house was built in 1841 on the site of the burial ground in Holme Bray, the burial ground was also extended at this date. In 1896 a small extension to the north of the meeting house was built to accommodate toilet facilities. Adjacent to the meeting house is a stable and hayloft which was originally used by Friends, later converted as Bainside Arts Barn run by the Friends and converted for residential use in the twentieth century.

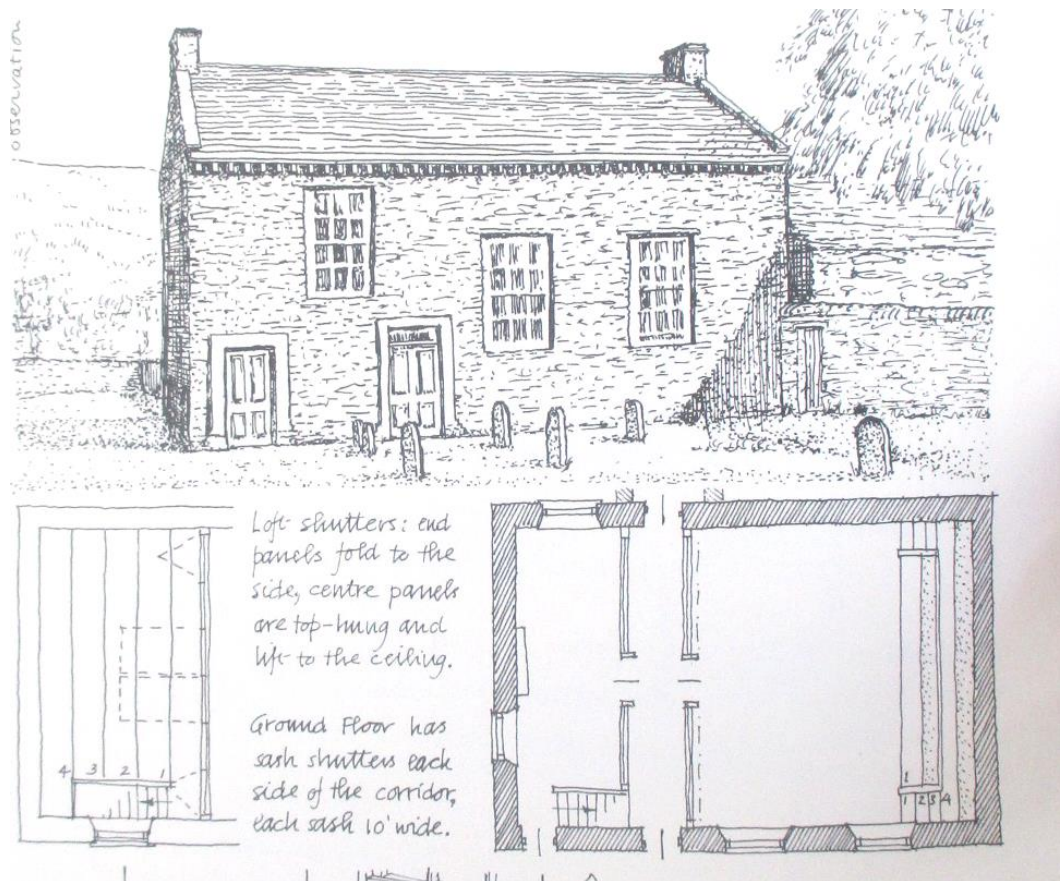


Figure 1: Ground floor plan (not to scale) and perspective
 (Butler, *The Quaker Meeting Houses of Britain*, 1999, vol. 2, p. 726)

2.2. The building and its principal fittings and fixtures

The meeting house was built in 1841. It is built with roughly coursed local stone, the roof is laid in stone slates, with coped verges, stone gutter brackets supporting uPVC guttering, and chimneys stacks to the gable ends. The building is aligned west to east, with a single-storey extension to the north containing a toilet. A former stable and hay loft, now a residential dwelling, is to the east of the meeting house. The main entrance elevation faces south and is asymmetric with three sliding sash windows with stone lintels and sills; the pair to the right serve the main meeting room and the higher window to the left serves the gallery. Doorways serving the two meeting rooms are located either side of the gallery window with ashlar stone surrounds with splayed bases. The four panelled door to the western side of the first window is smaller of the two entrances and gives access to the gallery, and the four panelled door with rectangular fanlight to the right leads into a passage giving access to the main meeting room and smaller meeting room. The west gable end has a 12-paned sliding sash window to right of centre, and evidence in the masonry of a former door opening and scarring on this elevation reveals a former building once adjoined the meeting house. The east gable is blind. The rear elevation to the north has a 12-paned sliding sash window and to the east of this a small lean-to building dating from 1896.

The interior of the lobby has tongue and groove panelling to the west wall incorporating a small door with iron hinges leading to under stair storage with original hat pegs above. The ground floor of the meeting house is divided by a passage in line with the porch; access into the main meeting room is to the east, the door to the north of the corridor leads to the toilet and the door to the west leads into the small meeting room. The meeting room is arranged with the Elders' stand at the east end and shutters at the west end, with top-hinged shutters

at gallery level. All the panelled shutters and the dado panelling are in a similar style, of unpainted pine and unmoulded. The stand has steps to either end, fitted benches to both levels and the dado panelling ramps up to the east wall. The front rail has plain balustrading. The flat ceiling and upper walls are largely plastered with modern plaster. The former women's room on the west side of the passage has a partition wall with shutters to the east and panelling to dado level to the west. The floor is laid with timber boarding and walls are plainly plastered. To the south wall is the entrance to the stone staircase. The gallery has a raked pine boarded floor and rows of fixed plain benches. Walls are plain plastered except for the east wall which vertical sliding shutters.

2.3. Loose furnishings

The meeting house contains pine benches of open-backed bench design with solid bench ends. Stored in the gallery is a bier.



Figure 2: Open-backed bench with solid bench ends.



Figure 3: Bier

2.4. Attached burial ground

The burial ground is still in use for burials and forms an L-shape to the south-west and north-west of the meeting house and is enclosed by a dry stone wall. The burial ground is laid to grass and contains round headed headstones of various sizes with basic information inscribed according to Quaker tradition. Burial records are located in the North Yorkshire Records Office and range from 1672 onwards.



Figure 4: Attached burial ground

2.5. The meeting house in its wider setting

The meeting house is located in Bainbridge, a village in Wensleydale in the Yorkshire Dales National Park, four miles east of Hawes and twelve miles west of Leyburn. The meeting house is located within the northern boundary of the conservation area designated in 2000. The area is generally characterised by eighteenth and nineteenth century buildings, many of which are described in the conservation area appraisal as having cottage frontages. The buildings are built in the local vernacular and line the village green which slopes towards the River Bain to the west. The village green and the rural setting provide picturesque views, enhanced by mature trees.

The meeting house and burial ground are enclosed by a dry stone wall with triangular stone copings and the boundary to the west has a dwarf stone wall with iron railings with spearheads and an entrance gate. To the east is a former hayloft and stables which has since been converted into residential accommodation; the River Bain flows to the east of the former stables. Built against the eastern side of the east boundary wall, facing towards the stables is a group of small stone outbuildings. Car parking is available to the north-east of the meeting house with access from a small lane to the north of the meeting house.

Detached burial grounds are located at Aysgarth NGR SE 00158 88349, Hawes NGR SD 87488 89837 and Low Ellington.



Figure 5: Outbuildings

2.6. Listed status

The meeting house is listed Grade II which is considered appropriate.

2.7. Archaeological potential of the site

No former buildings were present on site prior to the present meeting house being built. Overall, the archaeological potential of the site is considered to be medium.

Part 3: Current use and management

See completed volunteer survey

3.1. Condition

- i) Meeting House: Good.
- ii) Attached burial ground (if any): Optimal/satisfactory.

3.2. Maintenance

The last quinquennial inspection was in October 2015 by Jon Steel MRICS (chartered building surveyor). The report found the building to be generally in good condition. The Wensleydale and Swaledale Quaker Trust are currently devising a work plan to undertake the recommendations from the quinquennial inspection, and a five year maintenance and repair plan. The meeting has sufficient funds to maintain and repair the building.

3.3. Sustainability

The Meeting does not use the Sustainability Toolkit. The following measures have been implemented to reduce its environmental impact. These include:

- Climate change and energy efficiency: installed central heating, switched to a green electricity supplier three years ago. Ongoing energy management is discussed using the expertise of the Wensleydale and Swaledale Quaker Trust.
- Resource use, recycling and waste management: members and attenders regularly work to improve recycling and waste management.

- Wildlife, ecology and nature conservation: Friends are working alongside Millennium Trust to develop the burial ground as a wildflower meadow.
- Transport: Friends car share where possible.

3.4. Amenities

The meeting has all the amenities it needs, these include a main meeting room with gallery, a small library, kitchen and toilet facilities (fully accessible). There is no resident warden. An on-site car park is available for a small number of cars and further parking is available along the nearby roads. There is no secure parking for bicycles. The meeting house is not accessible by local transport.

3.5. Access

The meeting house is accessible to people with disabilities. There is level access into and throughout ground floor of the building with restricted access to the gallery above. The meeting house has an accessible toilet and a hearing loop has been installed. There are currently no facilities for partially-sighted people. A Disability Access Audit was conducted in 2001, but the recommendations from the report were not available at the time of this survey.

3.6 Community Use

Friends use the meeting house for about 6 hours each month. The meeting house is theoretically available for community lettings for a maximum number of 70 hours per week and is occasionally used for concerts (no more than two a year). The building could be let more, but there is little demand due to the location. The meeting has a formal lettings policy. Previous users value the building for its peaceful location, warmth, its historic character and kitchen and bathroom facilities close to the meeting room.

3.7. Vulnerability to crime

The meeting house has not been subject to anti-social behaviour or heritage crime. The locality is generally in an area which is well-cared for, has low crime levels, and high community confidence. Friends have not developed a liaison with the Local Neighbourhood Policing Team but would consider making contact in the future.

3.8. Plans for change

No plans for future change.

Part 4: Impact of Change

4.1. To what extent is the building amenable or vulnerable to change?

i) As a Meeting House used only by the local Meeting: Changes to this historic building are constrained by its historic features and character, and make it difficult for the meeting to further improve energy use and make alterations.

ii) For wider community use, in addition to local Meeting use: The building has the facilities it needs at present to accommodate wider uses.

iii) Being laid down as a Meeting House: it would be regrettable if this meeting house were to close and it would be difficult to adapt it for a new use given the sensitivity of its character, the setting and the interior.

Part 5: Category: 2

Part 6: List description

Name: **FRIENDS MEETING HOUSE**

List entry Number: 1301422

Location

FRIENDS MEETING HOUSE, VILLAGE GREEN

The building may lie within the boundary of more than one authority.

County: North Yorkshire

District: Richmondshire

District Type: District Authority

Parish: Bainbridge

National Park: YORKSHIRE DALES

Grade: II

Date first listed: 09-Jul-1986

List entry Description

BAINBRIDGE VILLAGE GREEN SD 99 SW (north side) 8/80 Friends' Meeting House

GV II Chapel. Early C19. Rubble, stone slate roof. Single storey, with gallery at left end, 3 windows in all. To left, 4-panel door in ashlar surround with splayed bases and plinths; 4-panel door below overlight in matching surround. In between at higher level, sash window with glazing bars to gallery staircase. To right of doors, 2 sash windows with glazing bars. Stone gutter brackets. Kneelers, ashlar copings. End stacks. Interior: contemporary panelling to meeting room and elders' gallery. First-floor gallery separated from meeting room by shutters. Stone staircase with twisted standard balusters.

Listing NGR: SD9344390410